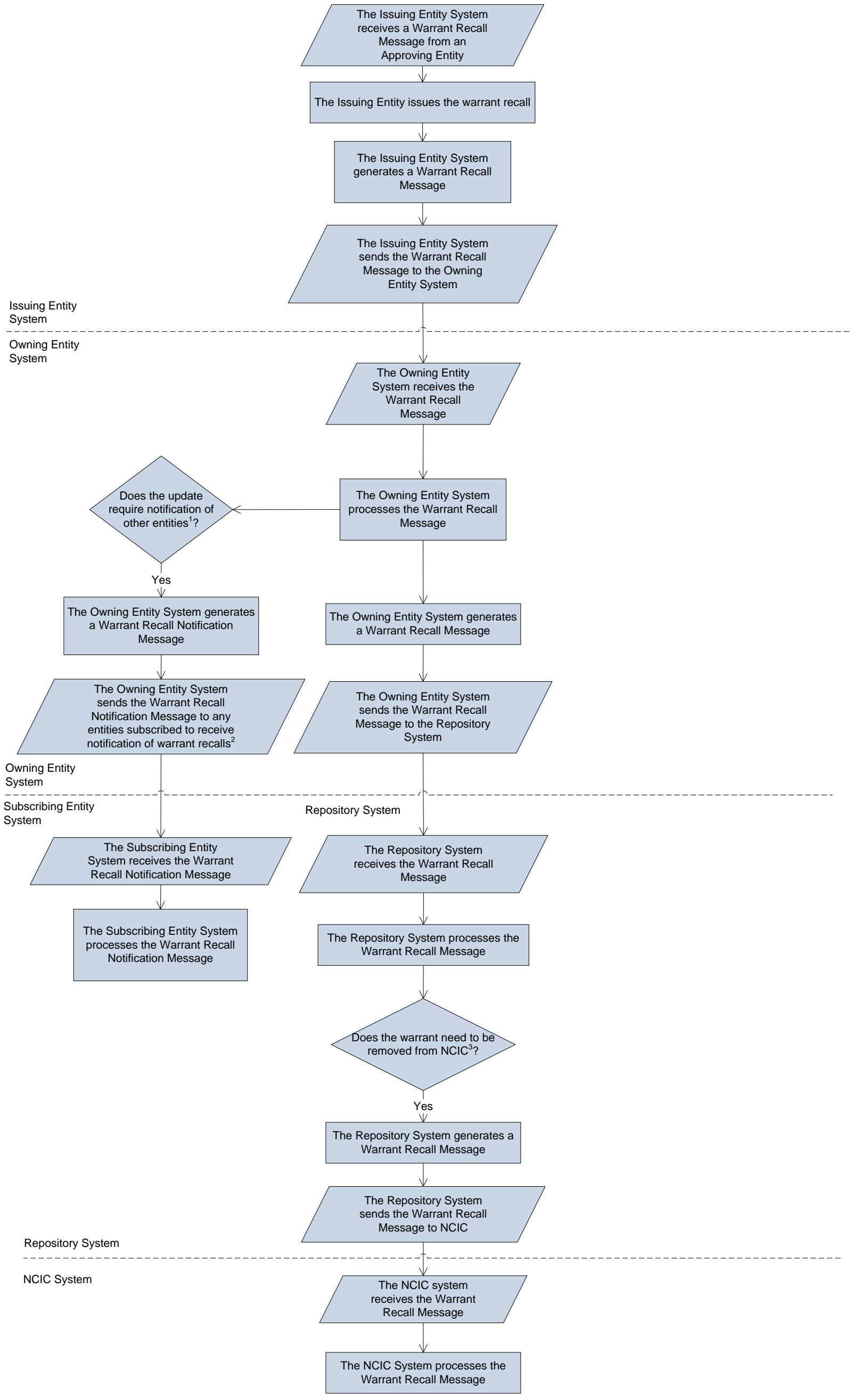


Issue Warrant Recall Process

Primary Flow



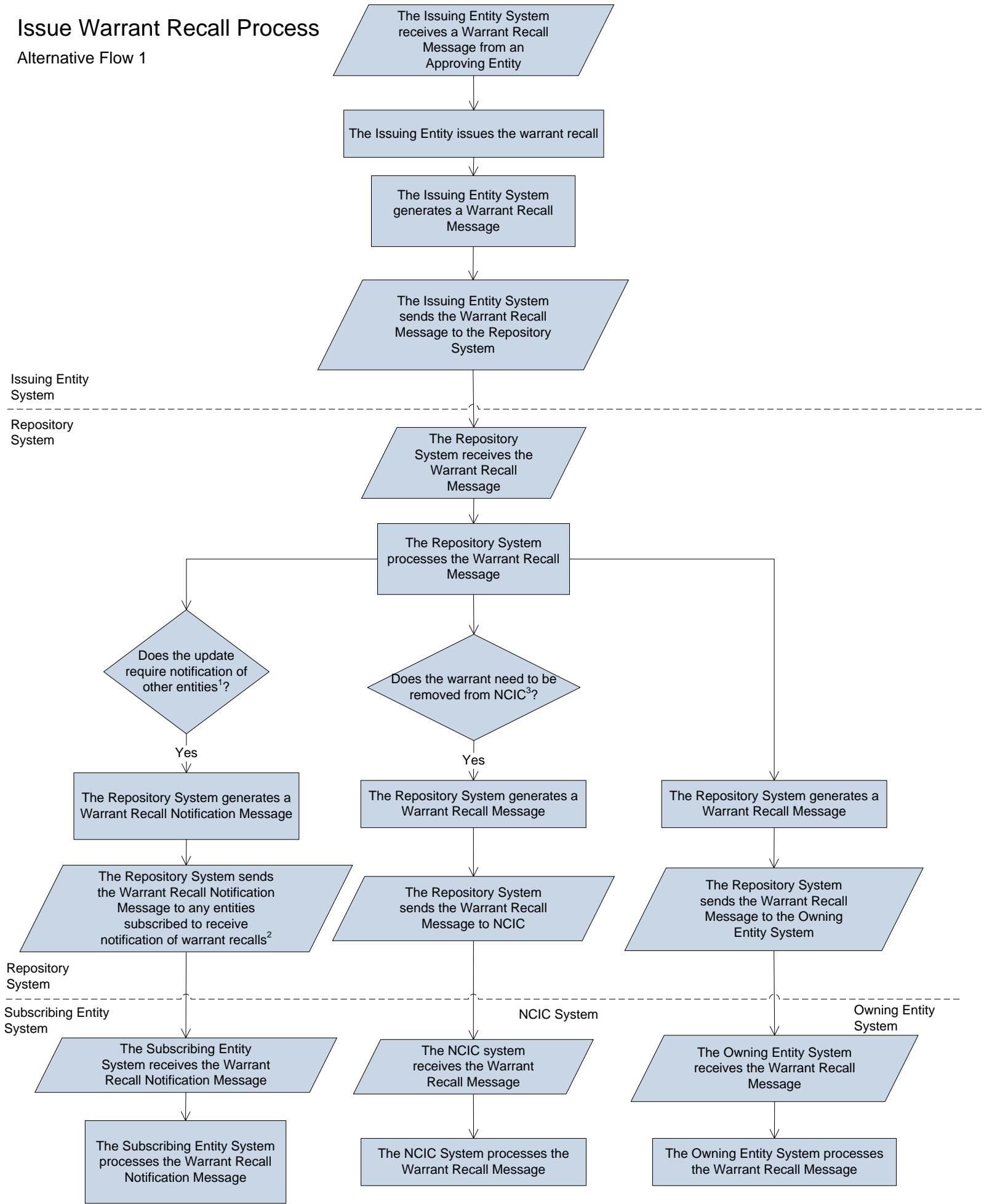
¹Which recalls will trigger a notification will depend on the jurisdiction, implementation, and the warrant itself.

²The entities to which warrant recall notifications are sent will vary by jurisdiction and implementation. For the purposes of this model any entity that receives such notifications is referred to as a “Subscribing Entity.”

³Not all warrant recalls are sent to NCIC. Notification of warrant recalls to NCIC will vary by the type of warrant, jurisdiction, and implementation.

Issue Warrant Recall Process

Alternative Flow 1



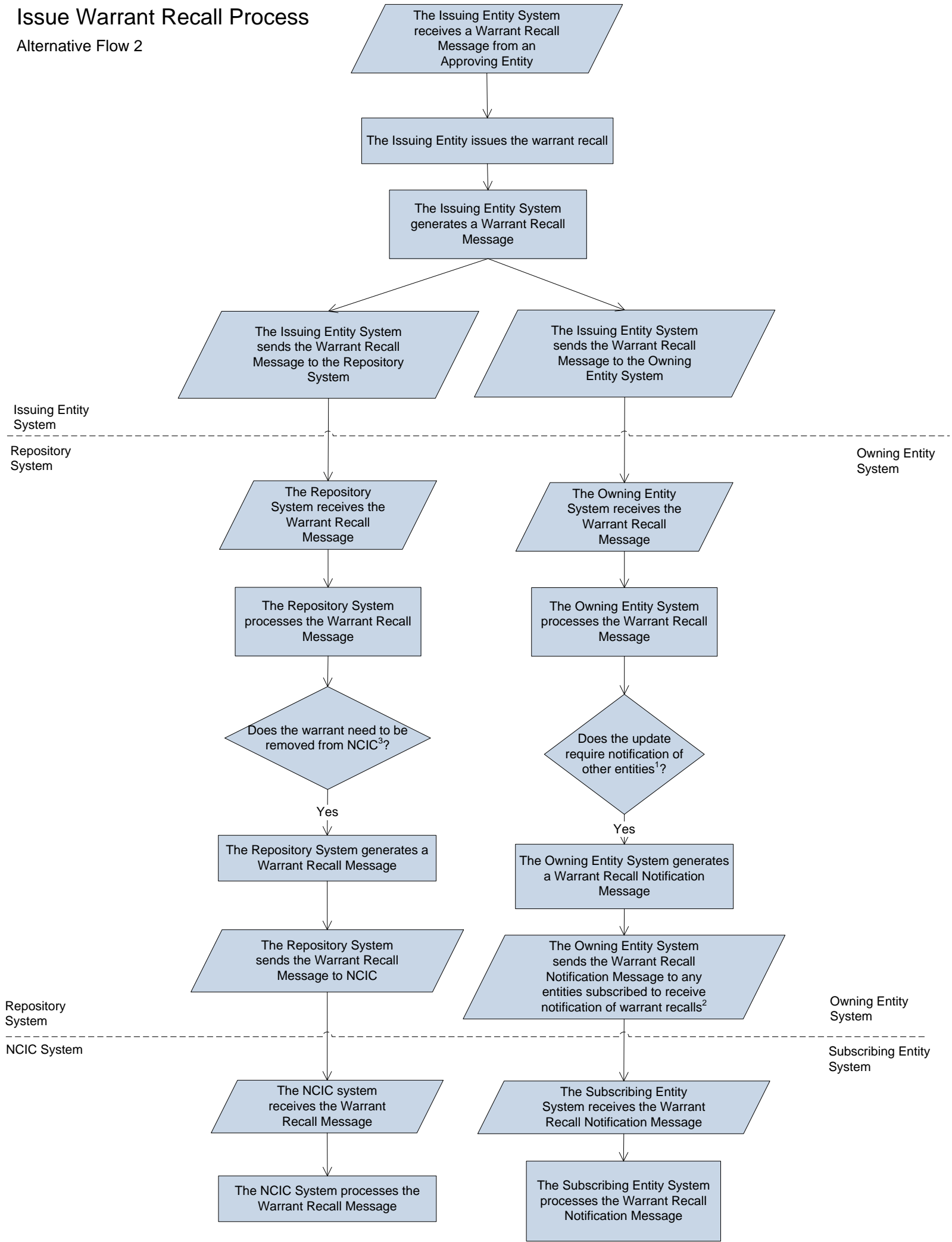
¹Which recalls will trigger a notification will depend on the jurisdiction, implementation, and the warrant itself.

²The entities to which warrant recall notifications are sent will vary by jurisdiction and implementation. For the purposes of this model any entity that receives such notifications is referred to as a "Subscribing Entity."

³Not all warrant recalls are sent to NCIC. Notification of warrant recalls to NCIC will vary by the type of warrant, jurisdiction, and implementation.

Issue Warrant Recall Process

Alternative Flow 2



¹Which recalls will trigger a notification will depend on the jurisdiction, implementation, and the warrant itself.

²The entities to which warrant recall notifications are sent will vary by jurisdiction and implementation. For the purposes of this model any entity that receives such notifications is referred to as a "Subscribing Entity."

³Not all warrant recalls are sent to NCIC. Notification of warrant recalls to NCIC will vary by the type of warrant, jurisdiction, and implementation.