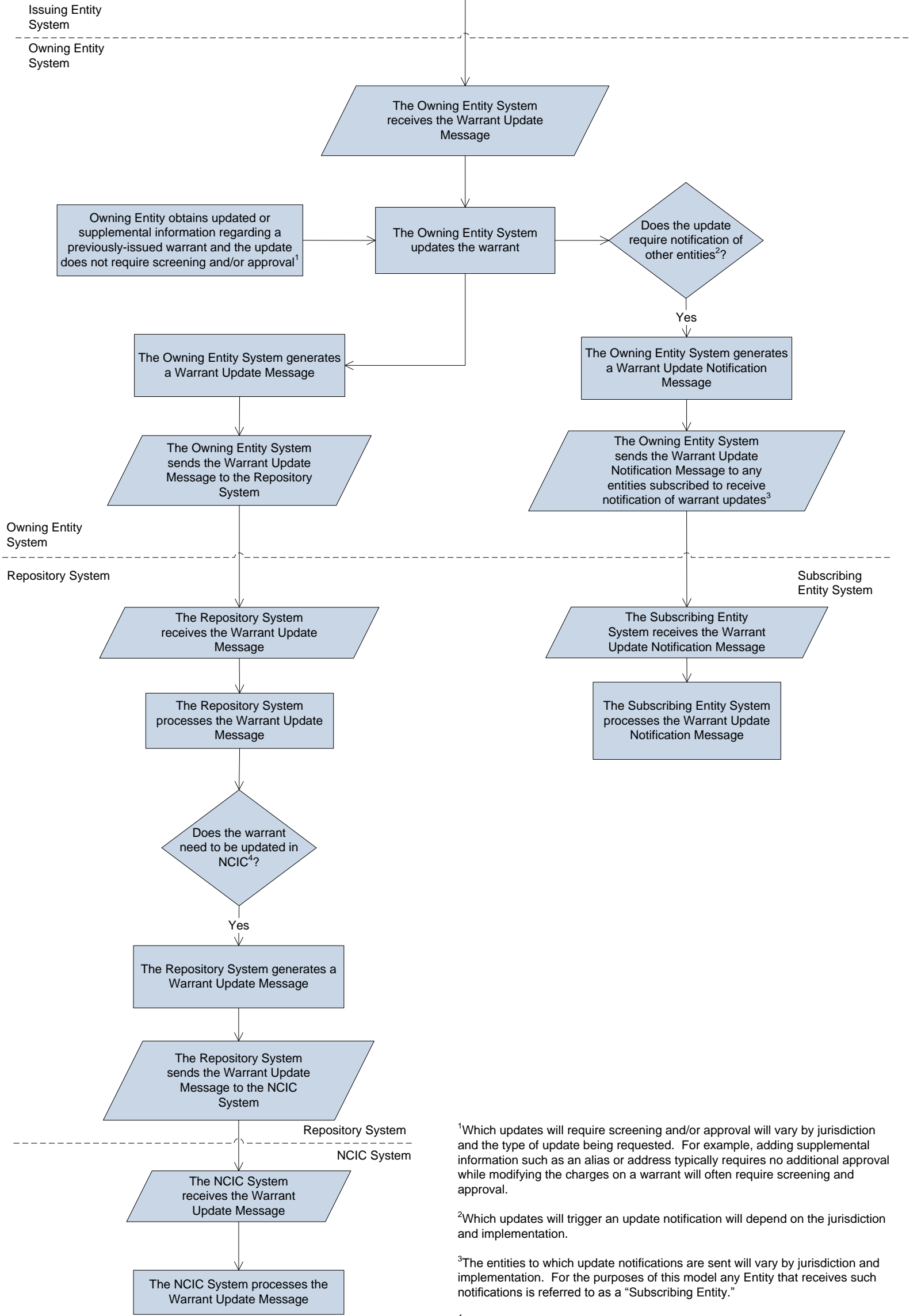


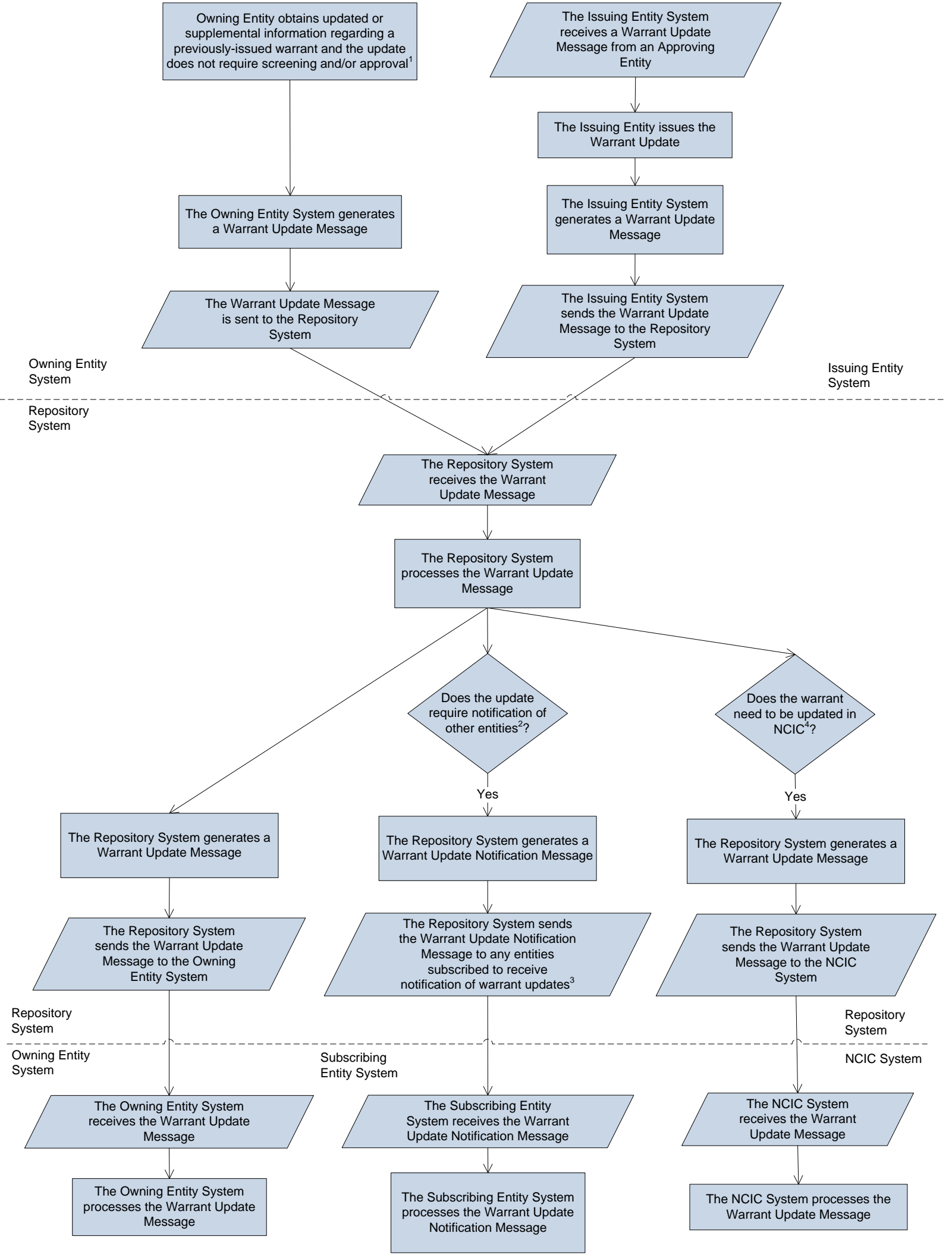
Issue Warrant Update Process

Primary Flow



Issue Warrant Update Process

Alternative Flow 1



¹Which updates will require screening and/or approval will vary by jurisdiction and the type of update being requested. For example, adding supplemental information such as an alias or address typically requires no additional approval while modifying the charges on a warrant will often require screening and approval.

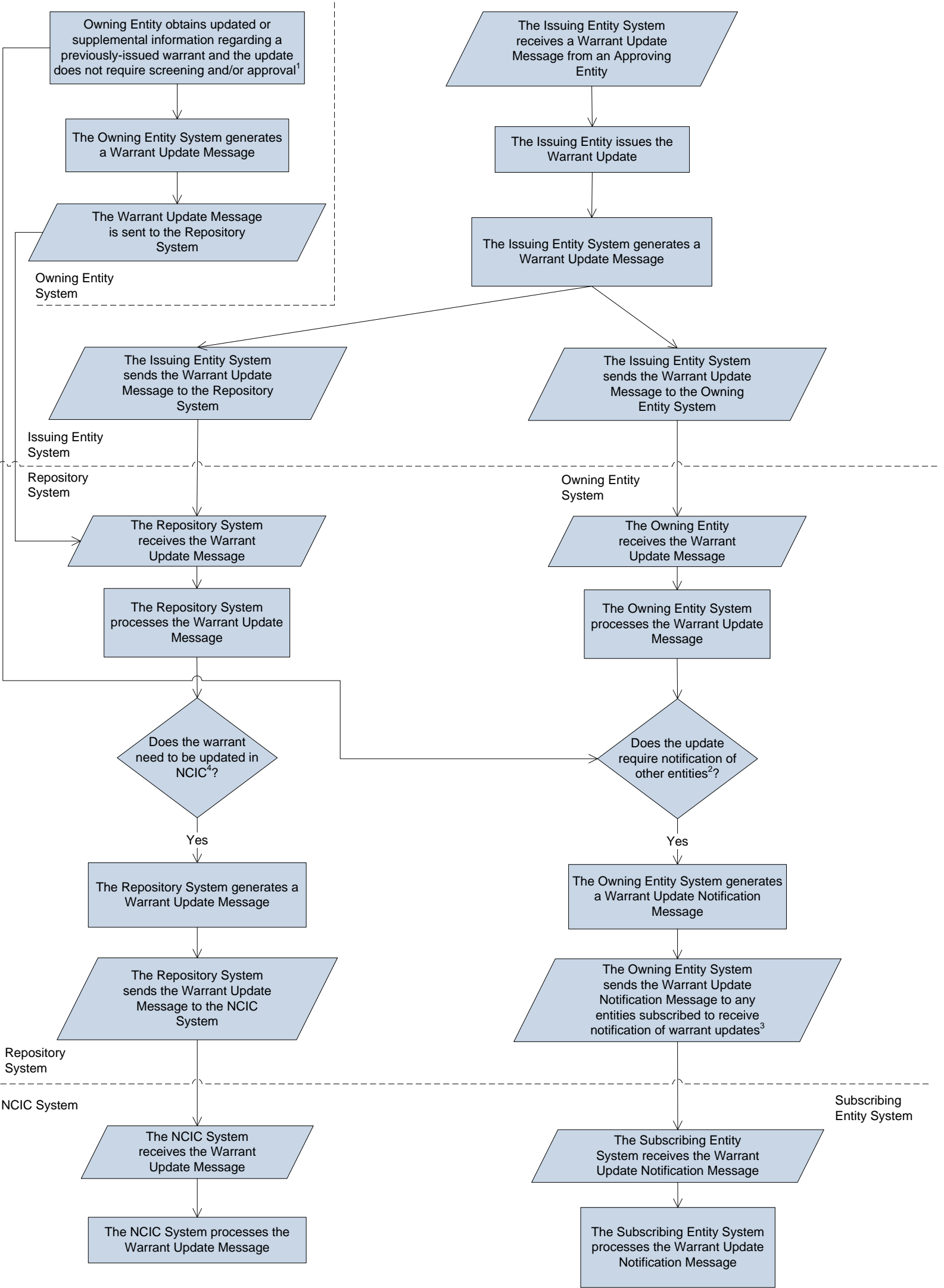
²Which updates will trigger an update notification will depend on the jurisdiction and implementation.

³The entities to which update notifications are sent will vary by jurisdiction and implementation. For the purposes of this model any Entity that receives such notifications is referred to as a “Subscribing Entity.”

⁴Not all warrant updates are sent to NCIC. Notification of warrant updates to NCIC will vary by the type of warrant, jurisdiction, and implementation.

Issue Warrant Update Process

Alternative Flow 2



¹Which updates will require screening and/or approval will vary by jurisdiction and the type of update being requested. For example, adding supplemental information such as an alias or address typically requires no additional approval while modifying the charges on a warrant will often require screening and approval.

²Which updates will trigger an update notification will depend on the jurisdiction and implementation.

³The entities to which update notifications are sent will vary by jurisdiction and implementation. For the purposes of this model any Entity that receives such notifications is referred to as a "Subscribing Entity."

⁴Not all warrant updates are sent to NCIC. Notification of warrant updates to NCIC will vary by the type of warrant, jurisdiction, and implementation.